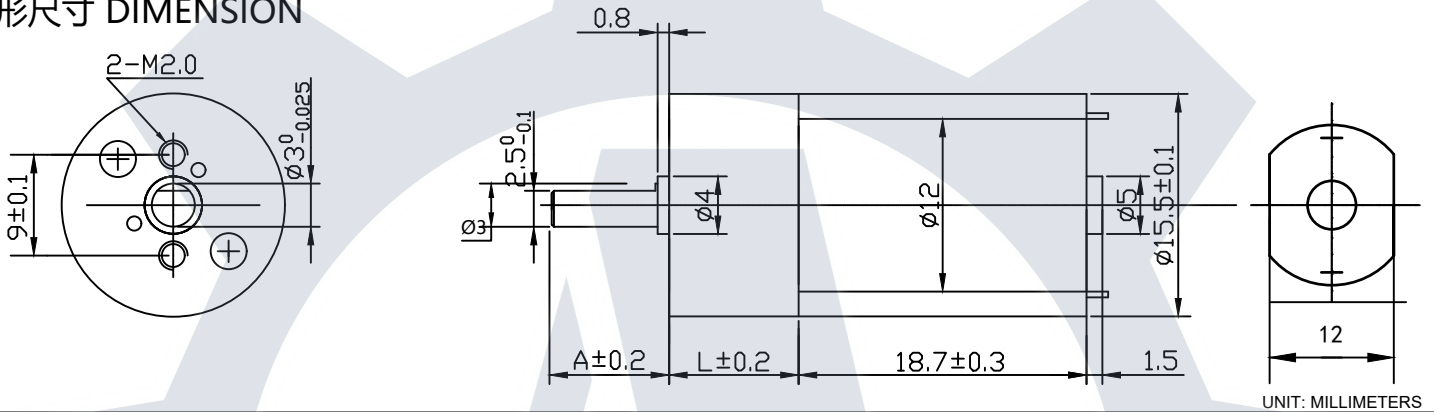


FAGM16-030



Number of stages	3	4	5	6	7
Reduction ratio	11, 16.7	24, 28.8, 33.3, 37.5, 43, 50	58, 72, 83.3, 86.4, 100, 150	200, 250, 300, 450	360, 500, 600, 750
Gearbox length 'L' mm	11.30	12.80	14.30	16.50	18
Shaft length 'A' mm	Shape: $\varnothing 3$ D-cut 0.5mm, shape & length customizable.				
Breaking torque(kgf.cm)	1	2	3	4	4
Gearbox efficiency	73%	65%	59%	53%	48%

外形尺寸 DIMENSION



直流正齿减速电机参数

SPUR GEARED MICRO DC MOTOR SPECS (voltage, current, torque, etc free customization)

电压 Voltage	级数 number of stages	3			4					5					6				7			
	减速比 Gear Ratio	11	17	24	29	38	43	50	58	72	86	100	150	200	250	300	360	450	500	600	750	
3V	额定扭力 kgf.cm Rated Torque	0.03	0.05	0.07	0.08	0.10	0.12	0.14	0.14	0.18	0.21	0.25	0.37	0.45	0.57	0.68	0.82	0.93	1.03	1.24	1.55	
	额定转速 RPM Rated Speed	655	424	300	248	189	167	144	124	100	84	72	48	36	29	24	20	16	14	12	10	
	瞬间容许扭力 kgf.cm Max Allowable Moment Torque	2.0	2.0	2.0	2.0	2.0	2.0	2.0	2.0	2.0	2.0	2.0	2.0	2.0	2.0	2.0	2.0	2.0	2.0	2.0	2.0	
	空载转速 RPM No Load Speed	818	529	375	310	237	209	180	155	125	105	90	60	45	36	30	25	20	18	15	12	
6V	额定扭力 kgf.cm Rated Torque	0.04	0.06	0.08	0.10	0.13	0.15	0.17	0.18	0.22	0.27	0.31	0.47	0.57	0.71	0.85	1.02	1.16	1.29	1.55	1.94	
	额定转速 RPM Rated Speed	618	400	283	234	179	158	136	117	94	79	68	45	34	27	23	19	15	14	11	9	
	瞬间容许扭力 kgf.cm Max Allowable Moment Torque	2.0	2.0	2.0	2.0	2.0	2.0	2.0	2.0	2.0	2.0	2.0	2.0	2.0	2.0	2.0	2.0	2.0	2.0	2.0	2.0	
	空载转速 RPM No Load Speed	781.8	505.9	358.3	296.6	226.3	200.0	172.0	148.3	119.4	100.0	86.0	57.3	43.0	34.4	28.7	23.9	19.1	17.2	14.3	11.5	

电机参数 MICRO DC MOTOR SPECS (voltage, current, torque, etc free customization)

型号 Model	额定电压 Rated Voltage	空载 No Load		额定负载 RATED LOAD					堵转 Stall	
		转速 Speed	电流 Current	转速 Speed	电流 Current	扭矩 Torque	输出功率 Output	效率 Efficiency	扭矩 Torque	电流 Current
	VDC	RPM	A	RPM	A	gf.cm	W	%	gf.cm	A
FAFF-030-12145	3	9000	0.06	7200	0.25	4	0.296	39.4	20	0.8
FAFF-030-09270	6	8600	0.04	6800	0.14	5	0.349	41.6	24	0.4